

Pushbutton Switches IP66 XB2-BP

Page 1 of 1

Description

XB2-BP series pushbuttons are used in the control of electrical circuits. A choice of colours is available and the units are supplied with a waterproof boot giving IP66 protection.

Features

- γ Choice of colours
- γ IP66 Protection



7HFKQLFDO6SHFLÀFDWLRQ

Rated Insulation Voltage: 660V

Operating Temperature: -5...+40°C

Operating Humidity: 45...85% RH

Contact Rating: 10(6)A @ 400V

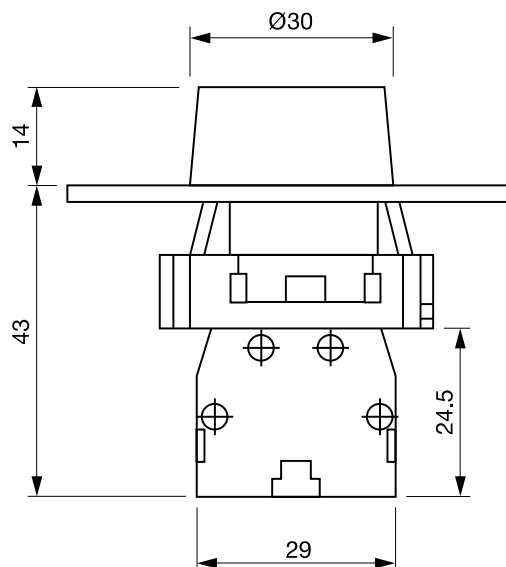
Electrical Life: 50 x 10⁵ operations

Protection: IP66

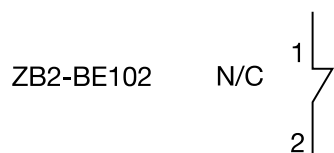
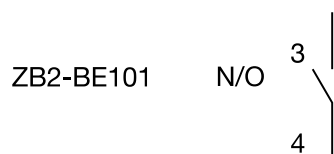
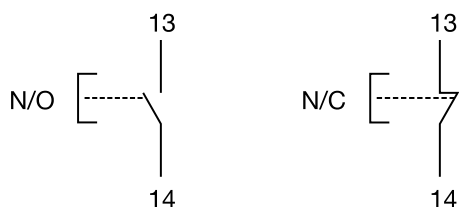
Order Codes

XB2-BP21	Normally open pushbutton black - IP66
XB2-BP31	Normally open pushbutton green - IP66
XB2-BP42	Normally closed pushbutton red - IP66
XB2-BP51	Normally open pushbutton yellow - IP66
XB2-BP61	Normally open pushbutton blue - IP66
ZB2-BE101	Normally Open Contact Block
ZB2-BE102	Normally Closed Contact Block

Dimensions



Circuits



ZB2-BE

