

Mushroom Head Pushbutton Switches XB2-BSx

Description

XB2-BS series pushbuttons are used in the control of electrical circuits. Units are supplied in a choice of 40mm diameter mushroom head with turn to release or key release mechanism.

Features

- 40mm diameter mushroom head
- Turn or key to release versions



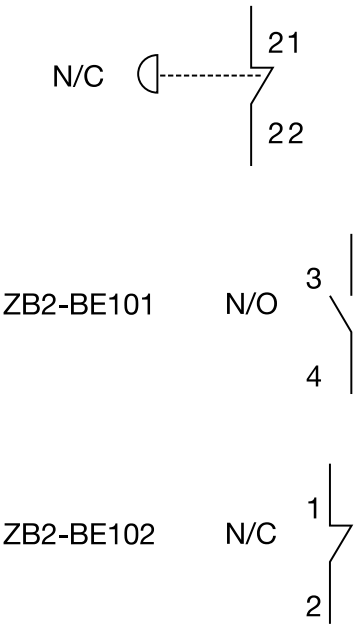
Technical Specification

Rated Insulation Voltage: 660V
Operating Temperature: -5...+40°C
Operating Humidity: 45...85% RH
Contact Rating: 10(6)A @ 400V
Electrical Life: 50 x 10⁵ operations
Protection: IP40

Order Codes

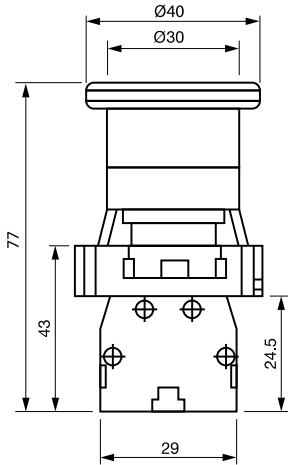
- XB2-BS542 Mushroom head pushbutton, turn to release, normally closed
- XB2-BS142 Mushroom head pushbutton, key to release, normally closed
- XB2-ER60 60mm diameter Emergency Stop warning circle
- ZB2-BE101 Normally Open Contact Block
- ZB2-BE102 Normally Closed Contact Block

Circuits

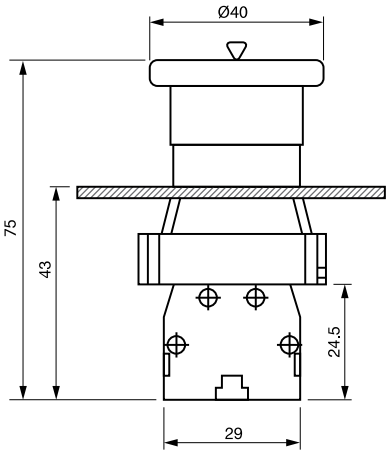


Dimensions

XB2-BS542



XB2-BS142



ZB2-BE

