

---

# Direct Insertion Temperature Sensor

## TE-DI

---

### Description:

The Direct Insertion Temperature Sensor is for installing in a T piece on small pipe work without the need for a pocket which eliminates the possibility of a dead leg.

---

### Features:

- Machined from solid
  - 5 lengths available
  - Easy to install
  - No need for a pocket
- 

### Technical Specification:

<b>Protection:</b>	IP65
<b>Termination:</b>	Flying Lead
<b>Temperature:</b>	-10 to 100°C
<b>Fitting:</b>	1/2" BSPT
<b>Probe:</b>	316 Stainless Steel
<b>Cable Length:</b>	1 Meter

---

### Order Codes:

<b>TE-DI/T</b>	10K3A1
<b>TE-DI/A</b>	10K4A1
<b>TE-DI/TAC</b>	1.8K
<b>TE-DI/SAT</b>	SAT1
<b>TE-DI/3K</b>	3K3A1
<b>TE-DI/H</b>	20K6A1
<b>TE-DI/D</b>	30K6A1
<b>TE-DI/P</b>	50K6A1
<b>TE-DI/100</b>	Pt100 RTD
<b>TE-DI/1K</b>	Pt1000 RTD
<b>TE-DI/LAN</b>	Ni1000TK5000

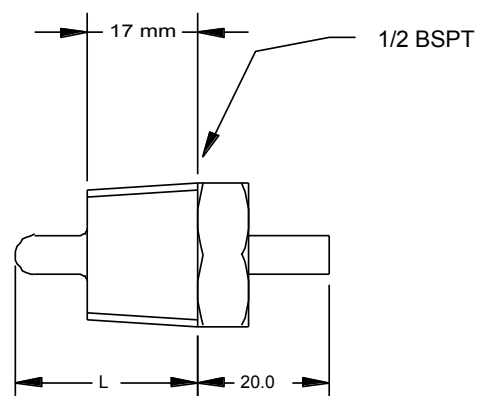
Add Suffix /15, 20, 25, 32, 40 for pipe size  
Example TE-DI/T/15



### Installation:

1. Disconnect power before carrying out any wiring on the Sensor.
  2. Screw sensor into T piece using suitable sealing tape
  3. Terminate using suitable junction box
  4. Sensor wire can be extended using suitable wire.
  5. Isolation valves are recommended either side of the T piece to enable maintenance or replacement.
- 

### Dimensions:



For 15mm Pipe L=25mm  
For 20mm Pipe L=28mm  
For 25mm Pipe L=31mm  
For 32mm Pipe L=34mm  
For 40mm Pipe L=37mm